

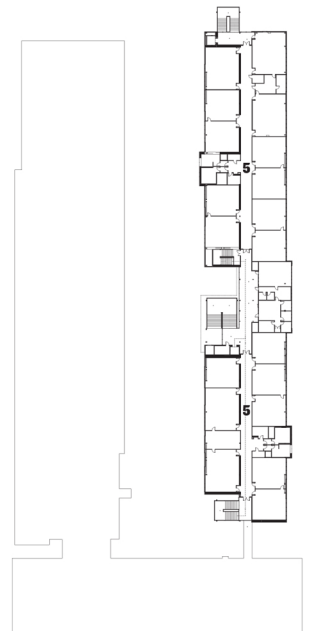
ground floor plan

A

- 1 east entrance
- 2 administration
- 3 library
- 4 multi-purpose room/gym
- 5 classrooms and science labs
- 6 courtyard
- 7 west entrance
- 8 gym
- 9 kitchens
- 10 student dining
- 11 entrance to underground parking
- 12 pool facilities
- 13 basketball and tennis courts
- 14 grandstand
- 15 athletic field
- 16 performing arts classroom



first floor plan



second floor plan