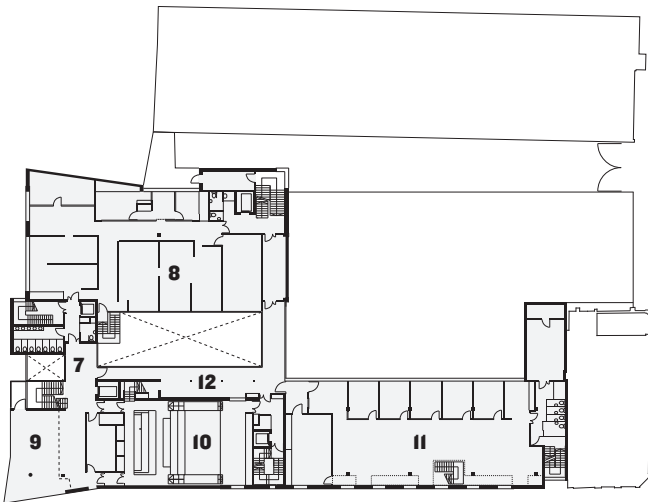
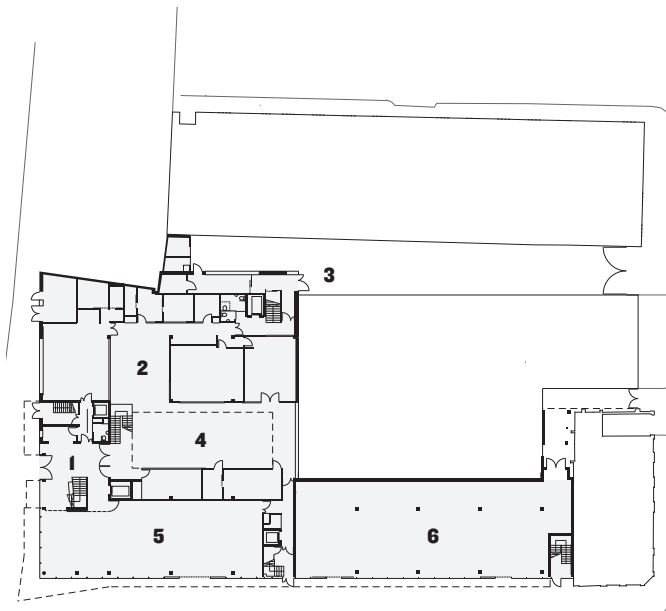


**second floor plan**



**first floor plan**



**ground floor plan**



- 1** entrance foyer
- 2** student entrance
- 3** printmaking workshops
- 4** machine hall
- 5** gallery
- 6** retail space
- 7** upper foyer
- 8** printmaking studios
- 9** café/bar
- 10** lecture theatre
- 11** innovation RCA
- 12** hot desking area
- 13** photography processing